

# FOCUS

SCHENECTADY PHOTOGRAPHIC SOCIETY  
1931-2006

## SCHENECTADY PHOTOGRAPHIC SOCIETY NEWS

Volume 77

September - October 2007

Number 1



*Three Trees near Water. Photo by Dan Burkholder*

### **Dan Burkholder will be kick-off speaker on September 19<sup>th</sup>**

*Robert Near*

The Schenectady Photographic Society is pleased to announce our kick-off meeting is scheduled for September 19, 2007. We are also happy to have Dan Burkholder, a truly world class photographer, who has embraced the digital photographic technology pushing it to the limits.

As photographers we have all looked at the world around us and said that would be a great image if only I could capture it as I see it; but film and technology just could not capture it. Dan has taken the new digital tools

we have today and applies them to capture the world around him as he sees and envisions it.

Dan Burkholder was one of the first photographic artists to embrace digital technology in the early 1990's. True to his love of the traditional photograph, Dan uses digital technology to build images that still look and feel like real photographs, not like something from a graphic designer's portfolio. Melding his unique vision with mastery of both the wet

*Please see Burkholder page 2*

## Burkholder

*continued from page 1*

and digital darkrooms, his platinum prints are now included in many museum and private collections.

Originating the digital-negative process in 1992, Burkholder has helped open doors for all black and white photographers interested in moving into the new electronic technologies. His award-winning book, *Making Digital Negatives for Contact Printing*, is regarded as the most authoritative work in the field.

Dan has taught at the International Center of Photography (New York), the Royal Photographic Society (Spain), the School of the Art Institute of Chicago, the Melbourne Royal Institute of Technology (Australia), Santa Fe Workshops, and at many other venues internationally. The University of Texas Press is publishing his forthcoming monograph, *The Color of Loss: an Intimate Portrait of New Orleans after Katrina*.

Dan Burkholder was born in Hagerstown, Maryland, an agricultural community in the Appalachian Mountains. He attended Franklin and Marshall College in Lancaster, Pennsylvania and Brooks Institute of Photography in Santa Barbara, California, where he received his BA and Masters Degrees in Photography.

Dan now lives in Palenville, New York, with his wife, Jill Skupin Burkholder. You can learn more about Dan's photography and his workshops at [www.DanBurkholder.com](http://www.DanBurkholder.com).

The kickoff meeting is free and open to the public. Light refreshments will be served. The meeting is at 7:30 p.m. at the First United Methodist Church at 603 State Street in Schenectady. The entrance is in the rear, off Chapel Street, a short one-way street off Nott Terrace. There is limited parking next to the church on Chapel Street and plenty of parking at the beginning of Chapel Street off Nott Terrace on the right.

## Mark McCarty to speak at first projected imaging group meeting

*Jeff Plant*

Mark McCarty, one of the deans of the Capital District photographic community, will show and discuss some of his recent work at the October 10 meeting of the SPS Projected Imaging Group (formerly the slide group.)

Many SPS members viewed the recent show at the Exposed Gallery in Delmar, where Mr. McCarty's work was shown with three other prominent local photographers.

In past years, Mr. McCarty had photos published in *Metroland* and participated in regional exhibits. He has had a commercial studio for over twenty years. His clients include colleges, hospitals, and advertising agencies.

In the time available outside of his busy schedule providing material for clients, Mr. McCarty finds time to produce high quality artistic images. His work has appeared in national publications such as *PDN*.

SPS looks forward to the opportunity to hear one of the best and most established local photographers discuss his work and methodology.

## Deconstruction of a Photo Essay

First Mentoring Night of the Year October 24, 2007

*Connie Frisbee Houde*

Have you ever wondered what to do with all those prints, slides and now digital files? How do I share them with my friends and family without boring them to tears and still share my love for photography? Or how do I turn my latest travel into an adventure for my friends and share some of what I experience? Or you may just want to share that last family gathering. If you have answered positively to these suggestions than the first mentoring night is for you and the photo essay or "slide show" is for you. And if you did not have a positive response to the questions, come anyway and see what can be done with a group of photos, a computer, a bit of software, and some imagination.


The dictionary defines an essay as "a short literary [insert photo] composition dealing with a single subject, usually from a personal point of view and with out attempting completeness." Consider a photo essay as telling a story with pictures whether it is in the form of a multiple windowed mat, a magazine spread, a presentation at work, an evening of sharing family photos or vacation photos. How these types of grouped photos are developed and presented will be discussed October 24.

We will present a series of masters of the

*Please see mentoring page 6*

**RESTORATIONS**

**MOTOPHOTO**  
The best place for pictures...guaranteed!!



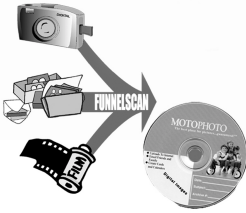
Trust your prescription to a drugstore, trust your memories to MotoPhoto

**Motophoto / Latham**  
Corner of Rt. 9 & Rt. 155  
671 New Loudon Rd.  
Latham NY 12110

*The Best Place For Pictures... Guaranteed!!*

- ➔ Free Index Print With every Roll
- ➔ Slide Processing
- ➔ Black & White Processing
- ➔ Enlargements
- ➔ Digital Film Processing

**Photos On CD**





Gatherers

Photo by  
Craig J.  
Barber

## October print meeting presents Craig J. Barber

Robert Near

Craig J. Barber will be the featured speaker at the first print meeting of the year on October 3, 2007. Craig utilizes two pinhole cameras triggered at the same moment in time, to produce remarkable images. Craig then produces platinum contact prints.

Craig J. Barber is a photographer who travels and works exclusively with the pinhole format and focuses on the cultural landscape. During the past 10 years, he has focused his camera on Viet Nam, Havana, and the Catskill region of New York State. In each, documenting a culture in rapid transition and fading from memory. His work has been exhibited throughout the United States, Europe and Latin America and is represented in several prominent museum and private collections including the Museum of Fine Arts, Houston; the Victoria and Albert Museum, London; the Brooklyn Art Museum; the George Eastman House, Rochester, NY; and Museo Nacional de Bellas Artes, Buenos Aires, Argentina, among others. He has received several grants including the Seattle Arts Commission, the Polaroid Corporation and the New York Foundation for the Arts. In 2006 Umbrage Editions published his book, *Ghosts in the Landscape: Vietnam Revisited*.

This is a quote from Karen Irvine, Curator Museum of Contemporary Photography describing Craig's latest body of work and book.

*"Craig Barber's sumptuous platinum prints capture the exquisite beauty of the Vietnamese landscape while also serving as a*

*visual diary of a veteran courageously returning to a place where he once witnessed absolute horror. Mostly unpeopled, Barber's pictures resonate with tension between beauty and eeriness. When humans do appear they are ghosted, becoming poignant visual metaphors for the imprecision, yet persistence, of memory, as well as for the unfortunate souls forever lost to and scarred by the war."*

Craig will have copies of the *Ghosts in the Landscape: Vietnam Revisited* available for purchase during this meeting. If you are in the Saratoga area, be sure to see Craig's current show *Ghosts in the Landscape* showing at the NYS Military Museum; I highly recommend seeing this show

**Wednesday, October 31 will be a special program by SPS members on topical techniques and helpful hints. Using ordinary objects found around the house for photographic purposes.**

Mail Order Hours: Mon-Thurs 8AM-7PM  
Fri & Sat 8AM-4:30PM

# h Hunt's

## Photo & Video

100 Main Street - Melrose, MA 02176 781-662-8822 FAX 781-662-6524

### The Pro's Source!

Make Hunt's Your Source for 1,000's Of Different Films, From Slide Film, Print Film, Black & White Film, & Infrared Film, All From Leading Manufacturers! - We Carry Over 100,000 Different Items, Making Us One Of The Largest Photographic Warehouses in The Country! - Hunt's Can Satisfy All Of Your Needs For Photographic Equipment, Video & Digital Needs! - No Item Too Large or Too Small!

For Camera Club Incentives & Specials:

## CALL: 800-924-8682



# Schenectady Photographic Society Print Competition Rules 2007 - 2008

The purpose of the competition is to provide a venue for showing prints. The competitive element exists to add interest, and these rules are intended to provide order in the competition and simplify the process of handling prints. Judging is inherently subjective and does not yield a definitive evaluation of the merits of individual images.

## 1. Monthly Competition October – April

Only dues-paid members may enter

Three categories

*Monochrome* – Images consisting of one color.

Uniformly toned images are acceptable in the monochrome category.

*Color*- including partially toned and hand-colored images.

*Assigned topic* – negatives must have been made after announcement of topics on May 1, 2007.

Each maker may enter **three prints each month**. However, **one** of the three must be entered in the monochrome category. And no more than two prints may be entered in any one category.

### Presentation

\*Prints must be 5"x7" or larger. An exception will be made where the process is not conducive to enlargement (eg, Polaroid, contact prints, etc.)

\*Prints must be mounted on matboard or foamcore.

\*Overmats are optional.

\*Mounts must be 8"x10" or larger, but may not exceed 16"x20".

\*Colored mounts or mats, and multiple overmats are not allowed. Mounts and mats must be white or black.

\*Prints in frames are not allowed.

\*Prints requiring special handling are not allowed. The Print Chair may disqualify prints that, in his sole judgment, may present risk of physical harm to other prints.

\*Signed prints are not allowed.

\*Prints must be submitted to the registrars on the night of competition. Prints will not be accepted after 7:30pm.

\*Each submitted print must have a 3x5 card (available on the night of competition) with required information filled in and placed on back of mount.

\*The negative or slide from which the print was made must be the work of the maker. Printing and mounting may be done commercially.

\*Prints that "place" may not be re-entered in a subsequent monthly competition. Prints may not be entered more than two times.

## 2. Judging and Scoring

\*An impartial judge will evaluate each print for impact, composition, technical execution, and presentation. The judging of the assigned topic category will include

the additional factor of how well the image responds to the assignment.

\*Prints will be displayed on racks under normal room lighting for judging. The arrangement of prints on the display racks will be at the discretion of the print stewards. The judge will not be given titles at the time of judging.

\*Judges will be asked to comment on prints that "place", and if time allows, on other prints that deserve discussion. This discussion is intended to help members and visitors discern the strengths and weaknesses that the judges see in the prints.

\*For the purpose of the Printmaker of the Year awards, prints that place in competition will be awarded points as follows:

First Place	7 points
Second Place	5 points
Third Place	4 points
Fourth Place	3 points
Fifth Place	2 points
Honorable Mention	1 point

If the number of entries is limited, the Print Chair may, at his/her sole discretion, eliminate one or more of the "places" for that month.

## 3. Year End Competitions

### Print of the Year

\*Separate Monochrome and Color Print competitions will be held at the May meeting.

\*Only prints that have been entered into a monthly competition during the 2007-2008 season of Schenectady Photographic Society may be entered into the Print of the Year Competition(s).

\*Entries must bear the original entry card on the back of the mount.

\*Presentation and entry rules are the same as for the monthly competitions.

\*Each maker may submit up to **two entries in each** of the Print of the Year categories.

### Printmaker of the Year

\*Recognition for Printmaker of the Year, Second Place Printmaker of the Year, and Third Place Printmaker of the Year will be awarded in the three categories of Monochrome, Color and Assigned Topic.

\*Award selection will be based on total points accumulated during the October – April monthly competitions of the respective categories. In case of a tie, the person with the most first place scores will be judged the winner. If first place scores are tied, then second place scores will be used, etc. until a clear winner emerges.

# Schenectady Photographic Society Projected Image Competition Rules 2007-08

## 1. Monthly Competition October -April

- \* Current member of SPS (dues paid)
- \* Submitting slides for competition
  - Competition limited to 35mm format (color and B&W)
  - Put a dark colored dot at bottom left corner of slide as normally viewed
  - Put your name and title of slide on same side as dot
  - Do not use gummed labels that require moistening as they may come off and jam the projector. Pressure sensitive labels may be used
- \* Complete a 3x5 card (available on night of competition) with the required information. Submit both slide and card when registering for competition
- \* Number of **slides** allowed each slide month - **four**  
Maker may enter two slides in general and two in assigned.
- \*Directions for entering **digital images** will be in the *Focus* and on the web site.
- \* Number of **digital images** allowed each digital image month - **three**. Maker may enter two in general and one in assigned or one in general and two in assigned.
- \*Slides
  - Slides must be an original slide, not a manipulation
- \* Digital images
  - Alternative processes or manipulations are allowed in creating an image. Every element of such an image must be an original creation by the maker.
- \* Assigned Topic
  - Must have been taken after May 1, 2007.
  - Must meet the assigned topic
- \* Entry Time
  - Slide group night of each month between 7:00p.m. and 7:30p.m.
  - No slides will be accepted after 7:30 p.m.

## 2. Judging

- \* Impact
  - Interesting subject, subjects which fill the frame, strong colors, texture, patterns, action, emotion, creativity

## \* Composition

Strong center of interest, leading lines, framing, vertical/horizontal format, perspective, graphic elements, rule of thirds

## \* Technical Quality

Focus, exposure, lighting, tonal range  
Image surface free of scratches, dust and finger prints

## 3. Scoring

First place	7 points
Second place	5 points
Third place	4 points
Fourth place	3 points
Fifth place	2 points
Honorable mention	1 point

If the number of entries is limited, the Slide chair may, at his/her sole discretion, eliminate one or more of the "places" for that month.

## 4. Year End Competition and Awards

- \* Slide of the Year / Digital Image of the Year
  - The slides or digital images must have been entered in competition between October 2007 and April 2008 (regardless of score received)
  - Three slides / three digital images may be entered for Slide of the Year and Digital Image of the year competitions
- \* Assigned Slidemaker of the Year / Assigned Digital Image maker of the Year
  - Award points will be based on total points accumulated during the October - April monthly competitions.
- \* Slidemaker / Digital Image maker of the Year
  - Award points will be based on total points accumulated during the October - April monthly competitions.
- \* Ties
  - In the event of a tie in any of the categories, the person with the most first place scores will be judged the winner. If first place scores are tied, then second place scores will be used, etc. until a clear winner emerges.

**Schenectady Photographic  
Society  
is a member of the  
Photographic Society of  
America**

**During judging, no one will be permitted in the judging area except the group chairperson and/or his or her designated assistant(s)**



## Jane Riley – Digital Image Maker

Jim Craner

The Digital Group is very pleased to have Jane Riley as our lead presenter for the year. Jane has been photographing for over 13 years and like so many photographers, her interest was born of a desire to share places and memories with others. A former high school Spanish teacher, Jane got into photography by producing slide shows of her travels for her students. Excited and encouraged by some exceptional shots, Jane got hooked on photography and has been perfecting her craft ever since.

A long-time SPS member, Jane has won numerous awards over the years, including recent recognition as 'Printmaker of the Year' for her stunningly simple image of a colorful indoor staircase. Jane and her husband divide their time between New York and Florida. Jane is justifiably proud of her formative role in the establishment of the Orlando Camera Club where she is a frequent speaker. Jane is a frequent contributor to our own *Focus* newsletter and her articles have appeared in magazines as well.

Jane's particular talent lies in her ability to distill an ordinary shot down to its essential properties and then optimizes it using Photoshop. The results are something extraordinary. On Digital night – October 17 – Jane will share with us the making of several of her digital images. The image of the bird and the butterfly illustrates well the adage that the whole is greater than the sum of the parts. In this image, Jane masterfully combines pictures taken separately into a powerful visual statement of simple creatures in their natural element. A survey of Jane's award winning work leads one to the conclusion that she is drawn by her favorite images contain strong graphic elements – lines, shapes and colors.

Jane's current digital imaging tools consist of two PCs, an Epson scanner and printer. She is a devoted Adobe Photoshop user (currently with version CS3). I was relieved to learn that Jane is currently struggling with Corel Painter (as am I). Keep trying, Jane! I've seen some beautiful work done with Corel Painter and hope to get there someday myself.

Jane occasionally arranges 'setups' in

her home, but more often finds inspiration by just walking around. I suspect she has a finely honed ability to position herself in the place of most potential. Jane's best advice for emerging digital photographers is to learn the basics – buy some books, take some workshops; and if everything fails, read the manual!

Please join us on Digital night, October 17, for an evening of learning from a master digital image maker.

### Mentoring

continued from page 2

photo essay in a digital presentation of some of the early pioneers of this form as they were presented in *Life Magazine* and others.

The creators of some of the past SPS award winning competition essays will discuss their creative process. We will discuss transitions, timing, motion, sound, titles, and sequencing.

And last but not least, we will demonstrate a number of the programs that are available for creating a digital essay - programs available both for the PC and the Mac.

This year we will be making only this formal presentation of photo essays to the club. Both Jim Craner and Connie Frisbee Houde will be available at most meetings with our lap tops to assist people with projects they may be working on. Just bring the "work in process" on a disk and let us have a look back in the kitchen or some other available quiet spot for a one on one consultation. Throughout the year various presenters will be working in the form of a photo essay and we will be sure to point this out.

The photo essay is a great forum to present your work to others. It is not just another competition. We hope that you will experiment and develop essays for your own enjoyment. One of our winners last year turned his essay into a small book for his family as well as a CD that he gave to his relatives who could then show it on their computers and or/ TV. That said, we will still be having a photo essay print and slide/digital competition at the end of the year and we hope that you will enter a piece you have created.

# Fragomeni

## Insurance

### 584-4200

Home Auto Life Business

# News You Can Use

## Exhibit features creative vision

Ken Deitcher has an exhibit at the Robert & Dorothy Ludwig Schecnectady Jewish Community Center at 2565 Balltown Road, Niskayuna, NY. The phone number is 377-8803. Go north on Balltown Road, passing the Knolls Research Center. The Center is on your left. The reception was held on September 7<sup>th</sup>. The exhibit will be up till the end of October.

It will feature Ken's creative vision in photographs he has taken and printed of local as well as of exotic areas and nature subjects. Images of his digital creativity and imagination will be shown. Come and enjoy unusual images of the past, present and future of photography.

## SPS members do well at Altamont Fair

Robert Near won first place and third place in the digital photography division. Sue Gersten took a third place in the color print group.

## Sue Gersten has two exhibits

Sue Gersten has a photo in the juried show at the Saratoga Inside-Out Show. The juror was David Miller, the Tuthill Professor of Studio Art and Director of the Art Gallery at Skidmore College. The show is up from August 13<sup>th</sup> to September 22<sup>nd</sup>. The Saratoga Arts Center Gallery is at 320 Broadway, Saratoga Springs. Gallery hours are Mon – Thurs 9am to 5pm and till 7 pm on Friday. Saturday hours are 11am to 5pm. The reception was Saturday, September 1<sup>st</sup>.

The second exhibit is at the Java Jazz in Delmar from August 18th through the end of September. It is a show of African people. A reception was held on September 7th.

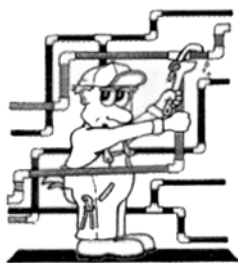


## SPS has exhibit at the Bethlehem Library

The SPS travelling exhibit has been on display at the Bethlehem Library, Delaware Ave, Delmar the month of August. Twelve members helped to hang the show. They are: 1 to r: Judy Breslau, Harvey Gurien, Luba Ricket, Ray Henrikson, Diane Reiner, Jeff Perkins, Barb Lawton, Bob Gough, Jack Hurley and John Ogden. Not shown is Stewart Sacklow. The photo was taken by Ruby Gold.

## Dues are now \$40.00

The dues for an individual or a family living at the same address are now \$40.00.



## Frank Bumbardatore

Plumbing & Heating  
(518) 372-5038

Licensed & Insured

MC GREEVY

- B&W Film Processing
- E6 Film Processing
- B&W Custom Printing
- Specialty Papers & Toning
- Antique Photos, Glass Negatives
- B&W Mixed Prints
- Artists Slides & Transparencies
- Custom R Prints

High Quality  
Personal Service

426-1039

11 Liberty Street  
Albany, NY 12207

## The Professional's Lab

The McGreevy ProLab is proud to be offering the winners of each monthly slide competition the prize of 5 rolls of E6 processing.

We installed the E6 machine in 1997 and have been committed to operating a clean, consistent line, with accurate color balance. Please give us a try.

24 exp. = \$5.00  
36 exp. = \$6.75  
4 hr. turn-around.



Schenectady Photographic Society  
 Linda Buckman  
 3749 St. Highway 30A  
 Fultonville, New York 12072

**2007-2008 Board of Directors**

*President*

Kevin Sarsfield ksarsfie@nycap.rr.com

*Vice President*

Ray Henrikson rhenriks@nycap.rr.com

*Treasurer*

Linda Heim lindahflowers@yahoo.com

*Recording Secretary*

Dale Winsor dalehope8@yahoo.com

*Corresponding Secretary*

Linda Buckman linda5@frontiernet.net

*Directors at Large*

Bob Gough rcgough@earthlink.net  
 F. Bumbardatore A2EEOS@aol.com

*Newsletter Editor*

Ruby Gold rubygold@verizon.net

*Assistant Editor*

Debra Van Deusen cre8ive@localnet.com

*Print Group Chair*

Robert Near rjnear@rjnphoto.com

*Assistants*

Tom Mack 377-5935  
 Bob Warner 377-3831

*Slide Group Co-Chairs*

Jeff Plant 452-1933

*Assistants*

Tom Mack 377-5935

*PhotoEssay Co-Chairs*

Connie Frisbee Houde

lilyconnie@verizon.net  
 renarc@aol.com

Jim Craner

*Mentoring Chair*

Jeff Perkins perkster46@yahoo.com  
 F. Bumbardatore A2EEOS@aol.com

*Digital Group Chair*

Jim Craner renarc@aol.com  
 Robert Near rjnear@rjnphoto.com

*Assistant*

Bob Riccardo briccardo@verizon.net

*Fine Arts Chair*

N. Sukumar  
 sukumar@sukumarfineartphoto.com

*Membership Chair*

Luba Ricket lubashot@aol.com  
 Cynthia Placek 785-1247

*Grab Bag Coordinator*

H. Johannessen chj@capital.net

*Web Master*

N. Sukumar  
 sukumar@sukumarfineartphoto.com

*Refreshment Coordinators*

Judy Breslau jbreslau@courts.state.ny.us  
 John Ogden jogden@capital.net

*Church Coordinator*

Don Krauter 399-1869

**Web Page Address**

**[www.schenectadyp photographic society.com](http://www.schenectadyp photographic society.com)**

©Schenectady Photographic Society and its Contributors. The contents of the newsletter are copyrighted. No material herein may be reproduced in any manner without the written permission of the Editor or the material's specific contributor.

**September - October Calendar**

Wednesday, Sept 19	Kick-Off meeting: Pushing digital photographic technology to the limits / Dan Buckholder
Wednesday, October 3	Print group: Pinhole camera magic / Craig J. Barber Assigned topic: Mode of Transportation
Wednesday, October 10	Imaging group: Recent work / Mark McCarthy Assigned topic: Agriculture (Digital projection)
Wednesday, October 17*	Digital group: Master digital image maker / Jane Riley
Wednesday, October 24	Mentoring Night: Deconstructing the Photo Essay
Wednesday, October 31	Topical Techniques and Helpful Hints

Meetings are at 7:30 p.m.

\*Board meetings are at 6:30 p.m.

The *Focus* is published nine times a year by the Schenectady Photographic Society. The organization meets each Wednesday at 7:30 p.m. from October through May to promote and present informative programs, activities and competitions in the photographic arts for photographers throughout the Capital District. Members range from novice to expert. Annual dues are \$40.00 for individuals and families. The *Focus* newsletter is included in the membership dues. SPS meets at the First United Methodist Church, 603 State Street, Schenectady, New York. Parking and entrances are on Chapel Street, a one way street off Nott Terrace. Guests are welcome at all regular meetings.