

Learn the art of framing photos on print night

Gary Weitzman, co-owner of Artforms, has been designing and providing custom framing and art related services for close to 30 years. Starting in 1979, he began at Posters Plus (later known as Greenhut Gallery) and soon developed a corporate and residential division for the company. Creating a distinctive look through art and framing, Gary grew these areas into a strong and healthy niche and they still remain a constant to this day. Either working directly with the client or with an interior designer, Gary is able to select the art, choose the appropriate



A view of Artforms

framing and provide installation of the finished product, all with an eye for detail. In 1997 Gary and his wife, Jan, purchased the business from his former partner,

Please see Gary Weitzman page 3

Slide night takes us to the Himalayas

Three physicians from Albany, NY trekked through the Himalayas in April

2006 and ascended 19,000 feet up Mount Everest. Guided by a 26 Sherpa expedition, they went through rocky



Photo by Dr. Jun David

ravines, crossed swaying cable-and-wood bridges and survived an unexpected blizzard that dumped three feet of snow that covered all trails leading

Please see Dr. David page 3

Work Flow For Cutting Drop-Shadow Mats

Text and photo by John Saville

This procedure describes the workflow to cut a double mat, with **Logan 405 mat cutter**, and then place a piece of foam-core board between the two mats to give the appearance of a shadowbox with a drop shadow.

1. Cut a mat to fit the frame. This mat is called the **Top Mat**. Cut a second mat 1/8th inch smaller on all sides. This second mat is called the **Inner Mat**.
2. Cut a piece of 3/16" foam-core-board the same dimensions as the **Inner Mat**. Cut an opening in the foam core board 1" inch larger all round than the opening in the **Outer Mat**. Be sure the opening is centered in the mat.
3. Cut the **Top Mat** first, (the one with the larger opening). (Note: Use my Excel program, at end of article, to calculate the mat cutter settings.)
4. Place the **Top Mat** face down on a clean surface with the centerpiece in its former position.
5. Place a 1" piece of double-sided tape near each corner of the **Top Mat** and in the center of the cutout.
6. Place the **Inner Mat** face down on top of the **Top Mat** making sure that there is equal margin all around the edge of **Top Mat**.
7. Press the two mats firmly together in the areas of the double-sided tape to lock the two mats into position.
8. Reset the mat cutter and cut the opening in the **Inner mat**. (The **Outer Mat** will act as the depth guide while cutting.)
9. Using a putty knife, or other thin blade, pry the two mats apart.
10. Place the foam core board on top of the **Inner Mat** and press into place. Note: You may have to put some double-sided tape where needed to make the foam core adhere to each mat.
11. Place the **Outer Mat** on top of the foam core. Adjust the **Outer Mat** so there is equal amount of **Inner Mat** showing. Note: Measure the visible part of the inner mat using a 6" scale to get the inner mat margins exact.
12. Press down on all sides for good adhesion of the double-sided tape.
13. Mount the printed image on the back of the **Inner Mat**.



Double matted photo by John Saville

14. Mount the assembly in a frame. Note: You will need a deep frame to properly accept the mat assembly.

Dimensions for cutting drop-shadow double mat

	Input	Inches	Output inches
Frame Size	Height	14.00	
	Width	11.00	
Image size	Height	8.00	
	Width	5.30	
Visible Amount of Inner mat		0.500	
Mat Overlap of Image		0.200	
1. Inner mat Cutter Settings			
	Top, Bottom		3.200
	Sides		3.050
2. Outer Mat Cutter Settings			
	Top, Bottom		2.70
	Sides		2.550

Gary Weitzman

continued from page 1

changed the gallery name to Artforms, as it reflects more of what they do, and moved from Stuyvesant Plaza to 5 New Karner Road in Guilderland. The gallery now incorporates the art and custom framing that Gary has become known for with blown glass, fine crafts in many mediums, jewelry and unusual gifts. Everything for the gallery is hand crafted by American artisans from all over the country and carefully selected by Gary and Jan, as they work directly with the artists. Overseeing a staff that has been with them for many years and who understands the high standards that are expected of them, Gary and Jan continually strive to give the client a unique look using all archival materials, a level of service that is hard to find anymore and a rewarding experience.

We have asked him to talk about the art of framing and how he goes about making suggestions to customers, based on the work at hand.

Dr. David

continued from page 1

to base camp. They also suffered gastro-intestinal illness, high altitude sickness, fractured ankle, etc and when they truly needed the medications they brought along, they found out that the pills had all been exhausted as they were already doled out to sickened hikers. Despite all these, the slideshow of this trip will reveal stunning beauty of the mountains and certainly explain why this is a life-transforming experience.

Please join us on Wednesday, November 8th for an incredible journey as told by Jose (Jun) David. We don't often have a chance to see Mount Everest from the lens of a hiker.

**To see the *Focus* in color,
go to our website
and click on
the icon of the newsletter.**

Mentoring night to discuss everything you wanted to know about flash for digital and film

Max Tiller

On mentoring night, Wednesday, November 29th, Max Tiller and Jeff Perkins will give an inservice on the use of flash in digital and film photography. This is an area that many photographers shy away from because they do not know it's potential.

We will have some set ups using flash and show the results with a laptop and digital projector. Be prepared to be a model for the shoot.

SPS has another show

The SPS travelling show of photographs is hanging up in the Uncommon Grounds restaurant on Western Ave., near the SUNY campus. Last spring, the show was at the Uncommon Grounds in Saratoga.



RESTORATIONS

MOTOPHOTO
The best place for pictures...guaranteed!!™



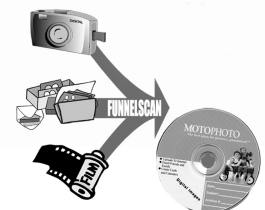
**Trust your
prescription
to a
drugstore,
trust your
memories to
MotoPhoto**

Motophoto / Latham
Corner of Rt. 9 & Rt. 155
671 New Loudon Rd.
Latham NY 12110

*The Best Place For Pictures...
Guaranteed!!*

- ➔ Free Index Print
With every Roll
- ➔ Slide Processing
- ➔ Black & White
Processing
- ➔ Enlargements
- ➔ Digital Film
Processing

Photos On CD





Missy at the Window - Jeff Perkins



Entombed in Plastic - Linda Wroble



The September Place - Not to Be
Kevin Sarsfield

October's First Place Photos

Orange Fence Fansasy - Jeff Plant



Sun Bathing - Robert Near



Mail Order Hours: Mon-Thurs 8AM-7PM
Fri & Sat 8AM-4:30PM

h Hunt's Est. 1889
Photo & Video
100 Main Street - Melrose, MA 02176 781-662-8822 FAX 781-662-6524
The Pro's Source!

Make Hunt's Your Source for 1,000's Of Different Films, From Slide Film, Print Film, Black & White Film, & Infrared Film, All From Leading Manufacturers! - We Carry Over 100,000 Different Items, Making Us One Of The Largest Photographic Warehouses in The Country! - Hunt's Can Satisfy All Of Your Needs For Photographic Equipment, Video & Digital Needs! - No Item Too Large or Too Small!

For Camera Club Incentives & Specials:
CALL: 800-924-8682



October Competition Results

Prints

Assigned Saratoga 23 Entries

* Kevin Sarsfield	The September Place - Not To Be	1
Bob Gough	Congress Spring	2
Ray Hull	Monogrammed Blinder	3
Luba Ricket	Mirrored Mare	4
Louie Powell	Top of the Tang	HM

Color 29 Entries

** Jeff Perkins	Missy at the Window	1
Bob Warner	One Tear	2
Steven Johnson	Lock 2, enhanced	3
Jeff Perkins	Strangest Show on Earth	4
Kevin Sarsfield	Alert and Ready	5
Burt Klinger	Alex and Abel	HM

Monochrome 20 Entries

*** Linda Wroble	Entombed in Plastic	1
Theresa Swidorski	Working	2
Bob Gough	Hosta	3
Max Tiller	Ann Lee Pond	HM

Judge: Leif Zurmuhlen

Program: Mark McCarty / Personal and project photography

Winner's Notes:

*Kevin used a Leica M5 with a 50mm Summicron lens and Tri-X film to photograph this winner. He wrote: I drove by the track after playing golf in Saratoga and noticed the gate open. It looked inviting, despite the "Private Property" signs. I pulled in, grabbed the camera and started shooting. Lighting was a bit bland - overcast - but the contrast in the track itself - totally devoid of people - struck me. I liked the reflections of the rooftops in the puddles, and the vacant stands. Made about 10 exposures before track security started questioning my motives. Some quick explanation - including showing them the SPS topic schedule for 2006 - saved me from the opportunity to photograph the Saratoga County Jail, from the inside...

**Jeff took *Missy at the Window* in New York City with a Casio Z750 digital camera set at ISO 200, f.4, 1/15 sec. Jeff says always have a pocket camera with you for those unexpected shots.

***Linda took this photo with a Canon Elan, Canon 70-210 lens and Kodak Tri Pan 400 film at a workshop this past summer sponsored by Nick Argyros in his Troy gallery.

Schenectady Photographic
Society
is a member of the
Photographic Society of
America

Slides

General 22 Entries

* Robert Near	Sun Bathing	1
Ken Deitcher	Stretch	2
Connie F. Houde	Sunrise	3
Ken Deitcher	Silhouettes	HM

Assigned Fences 11 Entries

** Jeff Plant	Orange Fence Fantasy	1
H. Johannessen	Columbia County	2
Luba Ricket	Shadow of Rails	3

Judge Stan Blanchard

Program Max Tiller / Norm Hagadorn - A Retrospective

Winner's Notes:

*Robert took this winning photo with a Nikon F5, a Nikkor 85mm PC Macro and Fuji Velvia 50 on a tripod. The photo was taken about one and a half hours after sunrise in a small flower bed at the entrance to the village of Athens, NY. Robert used an 85mm PC lens that can tilt the focus by tilting lens and he used some tilt in this photo.

**This beautiful winner was taken with a Nikon F100, a Nikon 300mm lens and Velvia 100 film with the camera on a tripod. It was full daylight and the fence was shot through leaves which gives it the out-of-focus effect and washed with green look.



Max Tiller delivering his presentation of a retrospective of Norm Hagadorn's work.



Photoshop hints

Text and photos by Ruby Gold

What happens when you have a great picture but there are a few faults which mar that photo?

You go to Photoshop!!!

Here is a picture of an adorable baby but those folds in the background and the books on the chair (put there to keep it steady when the baby leans on it) are not attractive.

I like the texture of the background and



wanted to preserve that so I used the clone tool. Click on the clone tool and then Alt click in an area near the folds. Use a fairly large brush, perhaps 95. Work slowly until all the shadows are gone. Next, choose the eye dropper and pick up

the lightest color on the chair. With a smaller brush, perhaps about a 30, paint over the books.



Almost finished. The whole picture could be lightened so go to Curves or Levels and very slowly adjust the picture until it is the lightness that you want.

Finished.

Digital Photography Tips

The following hints are from Jim Barthman's Photoshop Help column. He is a certified Photoshop ACE. PhotoshopHelp provides FREE answers to all your Photoshop questions. The goal is to build a knowledge base of clear, concise answers to real-life Photoshop problems.

<http://photoshophelp.blogs.com/photoshophelp/2005/01/index.html>

Forever is a Relative Term

As you meander your way through Photoshop life, you'll, no doubt, encounter more than a few Warning boxes reminding you of the implications of your decision. After a while, they can become annoying. Fortunately, Adobe has equipped many warnings with an option to make them go away. Select the **Don't Show Again** checkbox and you're all set. But what if you DO want to see the default Warnings again? Are they really gone forever? Nothing is forever. The proof is in the Preferences. Choose **Edit > Preferences > General**

The **General Preferences dialog box** appears.

Click the **Reset All Warning Dialogs** button.

Surprise! A warning dialog appears reminding you the default warnings will display now.

Click **OK**, to close the warning.

Click **OK**, to close the **Prefs**. You're done.

I bet you always wondered what that button was for, didn't you?

Fragomeni

Insurance

584-4200

Home

Auto

Life

Business

News You Can Use

SPS *Focus* does it again

The SPS *Focus* newsletter won third place in the Photographic Society of America's annual international newsletter contest. This is the thirteenth year in a row that the *Focus* has won a first, second or third or placed in the contest.

Robert Near leads SPS members on a field trip

Robert Near led a few SPS members on a trip to the Catskills to shoot waterfalls on October 15th. Below, that is the backs of Robert Gough, John Saville and Robert Near. Below right, Joe Rutsky's stepson Eric who took as many pictures as the adults.



Photo by Bill Lanahan

Ken Deitcher receives accolades

Ken Deitcher received a 3 Star Rating in PSA's Electronic Imaging Division for all his acceptances in International Sanctioned Salons.

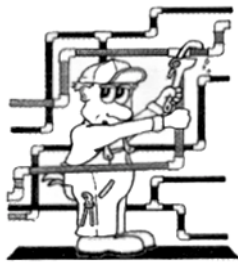
In addition, he had an article published in *DIGIT*, the Autumn 2006 digital division publication of the Royal Photographic Society. The article is entitled 'True Digital Infrared as seen by Dr. Ken Deitcher FPSA'.

Magazine honor for Jeff Perkins

Popular Photography picked Jeff Perkin's photo for their second place winner in the Your Best Shot contest in the October issue. This same photo took first place in the SPS October color print competition.



Photo by Robert Gough



Frank Bumbardatore

Plumbing & Heating
(518) 372-5038

Licensed & Insured

MC GREEVY

PROLAB

The Professional's Lab

- B&W Film Processing
- E6 Film Processing
- B&W Custom Printing
- Specialty Papers & Toning
- Antique Photos, Glass Negatives
- B&W Mixed Prints
- Artists Slides & Transparencies
- Custom R Prints

High Quality Personal Service

426-1039

11 Liberty Street
Albany, NY 12207

The McGreevy ProLab is proud to be offering the winners of each monthly slide competition the prize of 5 rolls of E6 processing.

We installed the E6 machine in 1997 and have been committed to operating a clean, consistent line, with accurate color balance. Please give us a try.

24 exp. = \$5.00
36 exp. = \$6.75
4 hr. turn-around.



Schenectady Photographic Society
 Linda Buckman
 3749 St. Highway 30A
 Fultonville, New York 12072

2005-2006 Board of Directors

- President*
 Bob Gough 393-9562
- Vice President*
 Kevin Sarsfield 674-8592
- Treasurer*
 Linda Heim 439-1507
- Recording Secretary*
 Dale Winsor 437-0207
- Corresponding Secretary*
 Linda Buckman 922-7011
- Directors at Large*
 Linda Wroble 372-0091
 F. Bumbardatore 372-5038
- Newsletter Editor*
 Ruby Gold 463-1674
- Assistant Editor*
 Debra Van Deusen 882-5188
- Print Group Chair*
 Ray Hull 449-1707
- Assistants*
 Tom Mack 377-5935
 Bob Warner 377-3831
- Slide Group Co-Chairs*
 H. Johannessen 283-3556
 Jeff Plant 452-1933
- Assistants*
 Tom Mack 377-5935
- PhotoEssay Co-Chairs*
 Connie Houde 465-0582
 Jim Craner 526-2253
- Mentoring Chair*
 Jeff Perkins 438-1573
- Digital Group Chair*
 Jim Craner 526-2253
- Assistant*
 Ralph Roach 229-3813
- Fine Arts Chair*
 N. Sukumar 274-2968
- Membership Chair*
 Luba Ricket 869-6940
 Cynthia Placek 785-1247
- Grab Bag Coordinator*
 Linda Buckman 922-7011
- Web Master*
 N. Sukumar 274-2968
- Refreshment Coordinators*
 Judy Breslau 356-3805
 John Ogden 456-2993
- Church Coordinator*
 Don Krauter


Web Page Address
www.schenectadypicturesociety.com

©Schenectady Photographic Society and its Contributors. The contents of the newsletter are copyrighted. No material herein may be reproduced in any manner without the written permission of the Editor or the material's specific contributor.

November Calendar

Wednesday, November 1	Print group: Custom framing / Gary Weitzman Assigned: Fire
Wednesday, November 8	Slide group: Himalayan adventures / Dr. Jun David Assigned: Moving Water
Wednesday, November 15*	Digital: Essential Photoshop program and Digital Master Series
Wednesday, November 22	No meeting. Happy Thanksgiving
Wednesday, November 29	Mentoring: Everything you wanted to know about flash for digital photography / Max Tiller

Meetings are at 7:30 p.m.
 *Board meetings are at 6:30 p.m.



The *Focus* is published nine times a year by the Schenectady Photographic Society. The organization meets each Wednesday at 7:30 p.m. from October through May to promote and present informative programs, activities and competitions in the photographic arts for photographers throughout the Capital District. Members range from novice to expert.

Annual dues are \$30.00 for individuals and families. The *Focus* newsletter is included in the membership dues. SPS meets at the First United Methodist Church, 603 State Street, Schenectady, New York. Parking and entrances are on Chapel Street, a one way street off Nott Terrace. Guests are welcome at all regular meetings.