

FOCUS

SCHENECTADY PHOTOGRAPHIC SOCIETY NEWS



Volume 76

September - October 2006

Number 1



The Noble Porch 1999 from Shelby Adams's book *Appalachian Lives*

Shelby Adams will be kick-off speaker on September 20th

Jeff Perkins

The Schenectady Photographic Society is pleased to announce our kickoff meeting is scheduled for September 20, 2006. We are most happy to have Shelby Lee Adams, a renowned photographer of life in Appalachia, as our speaker.

Mr. Adams is a wonderful humanistic photographer and has a great presentation regarding his very personal photography of the people living in rural Kentucky. He is internationally known and represented by some of the best galleries in the country. His works, considered collector photographs, command thousands of dollars per image. The Edelman Gallery writes:

Shelby Lee Adams was born in Hazard, a small town in eastern Kentucky. Although he

grew up in the back seat of his father's car, moving from place to place, he settled near Hot Spot, living with his grandparents while he attended high school. Trapped between the worlds of country and town kids, Adams never fit in, immersing himself in photography books and anything affiliated with the arts.

This was the mid 1960s and the Peace Corps had a great interest in the poverty sweeping the people of Appalachia. When a film crew visited his home town, Adams naturally wanted to help, taking them to meet his grandparents and his uncle so they could film their daily lives. When the media described them as malnourished and poor, his friends and family felt betrayed. This devastated Adams, who felt he had misled the people he so dearly loved — an experience that had a

Please see Shelby Adams page 2

First print meeting of year presents Mark McCarty

Mark McCarty will speak about his photographs and printing when he addresses the first print meeting of the year on Wednesday, October 4th.

Mark McCarty has been a freelance commercial photographer for over 25 years, within the Capital Region and throughout the country. Working with the major ad agencies, art directors, editors, graphic designers and public relations firms in upstate New York



Bob and Bobie - photo by Mark McCarty

and western Massachusetts, Mr. McCarty's clients include the corporate sector, the government, health care agencies and colleges.

Mr. McCarty's work is known for the wide visibility it brings his clients, as evidenced by the numerous awards he has received.

In addition to Mr. McCarty's commercial accomplishments, he is widely recognized for his personal work, some of which is held in the permanent collections of the J. Paul Getty Museum, the Albany Institute of History and Art, the Museum of Fine Arts, Houston, and the International Center for Photography (ICP) in New York City. Museums and galleries from New York to Tokyo have exhibited his work.

Shelby Adams

continued from page 1

profound impact on him, leading him to photograph the people of Appalachia. It wasn't until he left Kentucky and attended the Cleveland Institute of Art that he understood the lessons he learned from the country people. Finally surrounded by artists, he experienced a complete culture shock, rejecting his Appalachian upbringing, telling people he was from Cincinnati. Embarrassed by his past, Adams stayed away from Hazard and his family, searching for a new identity. By the second year in college, Adams was exposed to the FSA photographers who were sent to the South to document people who were living in hardship. Although initially defensive about the FSA work, Adams submerged himself in documentary books, showing

them to his family on a summer visit. His uncle, a country doctor, took him on house calls to meet people similar to the ones in the books. More than twenty five years later, Shelby Lee Adams is still visiting these people, returning year after year, documenting their lives.

In his new works, Adams introduces us to families who have moved out of the remote mountain areas into trailer parks, where electricity and satellite dishes dominate the landscape. Whether photographing a father and child surrounded by their cows, a family gathering on a porch during Halloween or an older couple posing with their dog in front of a new satellite dish, Adams's images are so raw we want to both turn away and stare. That Adams returns to the mountains year after year is a testament

to his dedication to show their challenging existence while maintaining their dignity. Although he now lives in Massachusetts, Shelby Lee Adams's heart is forever in Appalachia. Mr. Adams will have books available for purchase during the evening.


The kickoff meeting is free and open to the public, light refreshments will be served.

The meeting is at 7:30 p.m. at the First United Methodist Church at 603 State St in Schenectady. The entrance is in the rear, off Chapel Street, a short one way street off Nott Terrace. There is limited parking next to the church on Chapel Street and plenty of parking on the beginning of Chapel Street off Nott Terrace on the right.

RESTORATIONS

MOTOPHOTO

The best place for pictures...guaranteed!!™



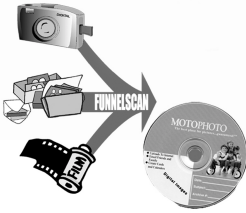
Trust your prescription to a drugstore, trust your memories to MotoPhoto

Motophoto / Latham
 Corner of Rt. 9 & Rt. 155
 671 New Loudon Rd.
 Latham NY 12110

The Best Place For Pictures... Guaranteed!!

- ➔ Free Index Print With every Roll
- ➔ Slide Processing
- ➔ Black & White Processing
- ➔ Enlargements
- ➔ Digital Film Processing

Photos On CD



Slide group to hear a Norm Hagadorn retrospective

Max Tiller will present a retrospective on the work and life of Norm Hagadorn to the Slide Group meeting on October 11th.

Norm was a very active print maker and a great technician during the 50's, 60's and 70's. Max will show many of Norm's film



images and also the same images done digitally.

Norm came into the digital work in 1999. Some of the resulting images won many awards in competition. Although he had not attended meetings he was cheered by the fact that he did win a Print of the Year competition in 2004.

Be prepared to view some wonderful images on October 11th.

Photo by Norm Hagadorn

Photo Essay group plans for the year

Connie Frisbee Houde

We begin the New Year after having an exciting year end competition with 10 slide/digital essays and not as many print essays as we have had in previous years. Because the process of developing an essay is such a personal and individual process the board has decided to have only two photo essay meetings. We therefore look forward to two full meetings and personal assistance as needed to help individuals as they are developing new essays. Jim Craner and Connie Frisbee Houde, the co-chairs, will be available at most meetings for consultation as you work on your project. Jim will be bringing his laptop each week.

At the first meeting, October 25, we will discuss what makes a photo essay. We will view a series of images in various combinations illustrating how different arrangements of prints can create different moods or feelings. We will also take the same images and demonstrate how the order of slides/ digital projections combined with the timing and type of music will also change the message or tone of an essay. Jim Craner will also demonstrate the use of the Pro Show Gold program for creating a digital essay. We ask that you come with an idea for an essay if you will be creating one so that we can help guide the creative process. We will end the evening by showing some winning essays and discussing how they were created and why they were successful programs.

The second meeting on March 28 is the last meeting before the competition and

will be used to view as many of the completed essays as possible to make sure everything is running smoothly (i.e. all programs are compatible) and perhaps to help make suggestions for tweaking the quality of the essays before the competition.

For the first time in a number of years we have developed guidelines for Photo essays.

1. One entry per person in each category.
2. Maximum length of a slide/digital essay is 8 minutes.
3. Participants are encouraged to use only their own images. Other images may be used only if they are vital to the narrative quality of the essay. Any images not the participants, must be credited. No more than 15% of the total photographs may be non-participant images.
4. It is the participant's responsibility to know these rules and if they are not followed your essay will not be accepted.

We look forward to working with you this year.

Mail Order Hours: Mon-Thurs 8AM-7PM
Fri & Sat 8AM-4:30PM

Est. 1889

h Hunt's

Photo & Video

100 Main Street - Melrose, MA 02176 781-662-8822 FAX 781-662-6524

The Pro's Source!

Make Hunt's Your Source for 1,000's Of Different Films, From Slide Film, Print Film, Black & White Film, & Infrared Film, All From Leading Manufacturers! - We Carry Over 100,000 Different Items, Making Us One Of The Largest Photographic Warehouses in The Country! - Hunt's Can Satisfy All Of Your Needs For Photographic Equipment, Video & Digital Needs! - No Item Too Large or Too Small!

For Camera Club Incentives & Specials:

CALL: 800-924-8682

Schenectady Photographic Society Print Competition Rules 2006 - 2007

The purpose of the competition is to provide a venue for showing prints. The competitive element exists to add interest, and these rules are intended to provide order in the competition and simplify the process of handling prints. Judging is inherently subjective and does not yield a definitive evaluation of the merits of individual images.

1. Monthly Competition October – April

Only dues-paid members may enter

Three categories

Monochrome – Images consisting of one color.

Uniformly toned images are acceptable in the monochrome category.

Color- including partially toned and hand-colored images.

Assigned topic – negatives or digital files must have been made after announcement of topics on May 1, 2006

Each maker may enter **three prints each month**. However, one of the three must be entered in the monochrome category. And no more than two prints may be entered in any one category.

Presentation

*Prints must be 5x7” or larger. An exception will be made where the process is not conducive to enlargement (eg, Polaroid, contact prints, etc.)

*Prints must be mounted on matboard or foamcore.

*Overmats are optional.

*Mounts must be 8x10” or larger, but may not exceed 16x20”.

*Colored mounts or mats, and multiple overmats are not allowed. Mounts and mats must be white or black.

*Prints in frames are not allowed.

*Prints requiring special handling are not allowed.

*The Print Chair may disqualify prints that, in his sole judgment, may present risk of physical harm to other prints.

*Signed prints are not allowed.

*Prints must be submitted to the registrars on the night of competition. Prints will not be accepted after 7:30pm.

*Each submitted print must have a tag on the back of the mount, upper left corner, indicating the maker’s name, title (if any), category, and month of entry.

*The negative or slide from which the print was made must be the work of the maker. Printing and mounting may be done commercially.

*Prints that “place” may not be re-entered in a subsequent monthly competition. Prints may not be entered more than two times.

2. Judging and Scoring

An impartial judge will evaluate each print for impact, composition, technical execution, and presentation. The judging of the assigned topic category will include

the additional factor of how well the image responds to the assignment.

Prints will be displayed on racks under normal room lighting for judging. The arrangement of prints on the display racks will be at the discretion of the print stewards. The judge will not be given titles at the time of judging.

Judges will be asked to comment on prints that “place”, and if time allows, on other prints that deserve discussion. This discussion is intended to help members and visitors discern the strengths and weaknesses that the judges see in the prints.

For the purpose of the Printmaker of the Year awards, prints that place in competition will be awarded points as follows:

First Place	10 points
Second Place	7 points
Third Place	4 points
Fourth Place	3 points
Fifth Place	2 points
Honorable Mention	1 point

If the number of entries is limited, the Print Chair may, at his sole discretion, eliminate one or more of the “places” for that month.

3. Year End Competitions

Print of the Year

Separate Monochrome and Color Print competitions will be held at the May meeting.

Only prints that have been entered into a monthly competition during the 2006-2007 season of Schenectady Photographic Society may be entered into the Print of the Year Competition(s).

Entries must bear the original entry card on the back of the mount.

Presentation and entry rules are the same as for the monthly competitions.

Each maker may submit up to **two entries in each** of the Print of the Year categories.

Printmaker of the Year

Recognition for Printmaker of the Year, Second Place Printmaker of the Year, and Third Place Printmaker of the Year will be awarded in the three categories of Monochrome, Color and Assigned Topic.

Award selection will be based on total points accumulated during the October – April monthly competitions of the respective categories. In case of a tie, the person with the most first place scores will be judged the winner. If first place scores are tied, then second place scores will be used, etc. until a clear winner emerges.

During judging, no one will be permitted in the judging area except the group chairperson and /or his or her designated assistant(s).

Schenectady Photographic Society Slide Competition Rules 2006-2007

1. Monthly Competition October -April

- * Current member of SPS (dues paid)
- * Submitting slides for competition
 - Competition limited to 35mm format (color and B&W)
 - Put a dark colored dot at bottom left corner of slide as normally viewed
 - Put your name and title of slide on same side as dot
 - Do not use gummed labels that require moistening as they may come off and jam the projector. Pressure sensitive labels may be used
- * Complete a 3x5 card (available on night of competition) with the required information. Submit both slide and card when registering for competition
- * Number of slides allowed each month - **three**
Maker has the choice of entering two slides in assigned and one in general or one in assigned and two in general
- * Alternative processes
Alternative processes or manipulations (including digital) are allowed in creating an image. Every element of such an image must be an original creation by the maker
- * Assigned Topic
Must have been taken after May 1, 2006.
Must meet the assigned topic
- * Entry Time
Slide group night of each month between 7:00p.m. and 7:30p.m.
No slides will be accepted after 7:30 p.m.

2. Judging

- * Impact
Interesting subject, subjects which fill the frame, strong colors, texture, patterns, action, emotion, creativity
- * Composition
Strong center of interest, leading lines, framing, vertical/horizontal format, perspective, graphic elements, rule of thirds
- * Technical Quality
Focus, exposure, lighting, tonal range
Image surface free of scratches, dust and finger prints

3. Scoring

First place	7 points
Second place	5 points
Third place	4 points
Fourth place	3 points
Fifth place	2 points
Honorable mention	1 point

4. Year End Competition and Awards

- * Slide of the Year
The slides must have been entered in competition between October 2006 and April 2007 (regardless of score received)
Three slides may be entered for Slide of the Year competition
- * Assigned Slidemaker of the Year
Award points will be based on total points accumulated during the October - April monthly competitions.
- * Slidemaker of the Year
Award points will be based on total points accumulated during the October - April monthly competitions.
- * Ties
In the event of a tie in any of the categories, the person with the most first place scores will be judged the winner. If first place scores are tied, then second place scores will be used, etc. until a clear winner emerges.



Schenectady Photographic
Society
is a member of the
Photographic Society of
America

During judging, no one will be permitted in the judging area except the group chairperson and/or his or her designated assistant(s)

Digital Meeting Nights
by Jim Craner and Ralph Roach

Hello and welcome to the Schenectady Photographic Society's 2006-2007 agenda of Digital Meeting Nights. We are honored to have inherited the co-chairmanship of the Digital Group from our esteemed predecessors Ken Deitcher, Max Tiller, Bob Riccardo, and Jeff Perkins. We owe them a lot for their foresight and perseverance. Digital meeting night has come a long way in just a few years, and we intend to take that evolution to the next level during the upcoming year.

Our goal is simple – to have something worthy enough to attract both the experienced and novice digital photographer to each and every digital meeting throughout the year.

Each 'Digital Meeting' night will be divided into two approximately equal parts. The first half of the meeting will be devoted to a coordinated series of lecture/demonstrations called *Essential Photoshop*. This series will progress from simpler to more

complex topics and will encompass the essential skills that everyone using Photoshop needs to master in order to optimize images.

After a refreshment break, the second half of each meeting will be a session from the *Digital Master Series*. Each lecture/demonstration in this series will focus on an advanced process that the presenter has mastered and uses to create striking images. The *Digital Master Series* will capitalize on the talents of others in the SPS who have demonstrated their mastery of a digital imaging technique both in competition and in day-to-day practice.

Organizing this year's programs is a work in progress. At present, we can promise the following schedule of lecture/demonstrations. The co-chairs reserve the right to modify the schedule as the year progresses. Future newsletter articles will herald the events of the coming month. Whatever the particulars, each meeting will have something for both the beginning and advanced digital photographer.

Meetings Dates and Lecture/Demonstration Topics

Meeting Date	Essential Photoshop	Digital Master Series
October 18, 2006	Intro to the 2006-07 programs. Digital Camera basics.	Recursive Digital Paintings <i>with Jeffrey Marks</i>
November 15, 2006	Opening Images and Cropping. Elements and CS2 Compared	Film Scanning
December 20, 2006	Common Retouching Problems	Creating Panoramas
January 17, 2007	Tonal Control	Blend Mode Magic <i>with Jeff Perkins</i>
February 21, 2007	Handling Color with Saturation	Gray Scale Conversion and Tinting
March 21, 2007	Imaging Sharpening and Sizing	SPS Members Digital Salon
April 18, 2007	Outfitting the Digital Darkroom	Fine Tuning Photoshop Preferences

We are looking forward to seeing everyone in September. It's going to be another great year at the Schenectady Photographic Society. Staying in tune with what's happening in digital photography should be near the top of every photographer's agenda.

Fragomeni

Insurance

584-4200

Home Auto Life Business



*Schenectady Photographic Society
is celebrating its
75th year in 2006.
Happy Birthday SPS.*

News You Can Use

Museum of Dance shows work of two SPS members

Burt Klinger and Ray Henrikson had photographs of dancers in a show at the Museum of Dance entitled "Dancers on the Edge." The photos were on display from July 2 until August 8th.

Photography of the World Trade Center

Sue Gersten will have a photography exhibit from August 1 to September 30, 2006 at Niskayuna Town Hall, Nott Street East, Niskayuna. The display includes a five year retrospective of the World Trade Center. It is a collection of images and memories of this terrifying event. And she will be doing an interview on the Schenectady Public TV station in early September on this subject and also an interview with Benita Zahn about it.

Sue will have a second exhibit at the Niskayuna Town Hall for the month of September on BIRDS. This exhibit will be on the second floor.

Sue is a busy gal - she won first place at the Altamont Fair for her photo "Mother's Hands."

Cynthia Placek is a weekly winner

Cynthia Placek was the only SPS member to win a weekly contest in the Daily Gazette summertime photo contest.

Three SPS members receive first places

Three SPS members received first places in the Schenectady Lock 7-12 Canal fest photo contest. They are :

Luba Ricket received 1st place for "Best Representation of Theme."

Barb Lawton received 1st place for "Best Interpretation of Theme."

Ray Koloski received 1st place for "Most Compositionally Appealing."

The contest theme was "Life Along the Mohawk and Hudson Rivers and was co-sponsored by the Chamber of Schenectady County and Photo Images. They hope it will become an annual event.

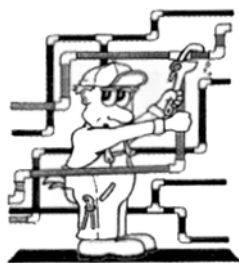
In addition to the above honor, Luba Ricket had three photos accepted for the ACCR Fence Show this year.

Congratulation to Bill Lanahan

Bill Lanahan won first place in the Digital Image Cafe contest.

Ken Deitcher wins award

The Photochrome club of San Francisco awarded Ken Deitcher 3rd place in their first annual photo contest.



Frank Bumbardatore

Plumbing & Heating
(518) 372-5038

Licensed & Insured

MC GREEVY

PROLAB

The Professional's Lab

- B&W Film Processing
- E6 Film Processing
- E6 Custom Printing
- Specialty Papers & Toning
- Antique Photos, Glass Negatives
- B&W Mixed Prints
- Artists Slides & Transparencies
- Custom R Prints

High Quality Personal Service

426-1039

11 Liberty Street
Albany, NY 12207

The McGreevy ProLab is proud to be offering the winners of each monthly slide competition the prize of 5 rolls of E6 processing.

We installed the E6 machine in 1997 and have been committed to operating a clean, consistent line, with accurate color balance. Please give us a try.

24 exp. = \$5.00
36 exp. = \$6.75
4 hr. turn-around.



Schenectady Photographic Society
 Linda Buckman
 3749 St. Highway 30A
 Fultonville, New York 12072

2005-2006 Board of Directors

- President*
 Bob Gough 393-9562
- Vice President*
 Kevin Sarsfield 674-8592
- Treasurer*
 Linda Heim 439-1507
- Recording Secretary*
 Dale Winsor 437-0207
- Corresponding Secretary*
 Linda Buckman 922-7011
- Directors at Large*
 Linda Wroble 372-0091
 F. Bumbardatore 372-5038
- Newsletter Editor*
 Ruby Gold 463-1674
- Assistant Editor*
 Debra Van Deusen 882-5188
- Print Group Chair*
 Ray Hull 449-1707
- Assistants*
 Tom Mack 377-5935
 Bob Warner 377-3831
- Slide Group Co-Chairs*
 H. Johannessen 283-3556
 Jeff Plant 452-1933
- Assistants*
 Tom Mack 377-5935
- PhotoEssay Co-Chairs*
 Connie Houde 465-0582
 Jim Craner 526-2253
- Mentoring Chair*
 Jeff Perkins 438-1573
- Digital Group Chair*
 Jim Craner 526-2253
- Assistant*
 Ralph Roach 229-3813
- Fine Arts Chair*
 N. Sukumar 274-2968
- Membership Chair*
 Luba Rickett 869-6940
 Cynthia Placek 785-1247
- Grab Bag Coordinator*
 Linda Buckman 922-7011
- Web Master*
 N. Sukumar 274-2968
- Refreshment Coordinators*
 Judy Breslau 356-3805
 John Ogden 456-2993
- Church Coordinator*
 Don Krauter


Web Page Address
www.schenectadyphtographicssociety.com

©Schenectady Photographic Society and its Contributors. The contents of the newsletter are copyrighted. No material herein may be reproduced in any manner without the written permission of the Editor or the material's specific contributor.

September - October Calendar

Wednesday, Sept 20	Kick-off meeting: Life in Appalachia/ Shelby Adams
Wednesday, October 4	Print group: Photographs and Printing / Mark McCarty Assigned: Saratoga
Wednesday, October 11	Slide group: Retrospective of work of Norm Hagadorn / Max Tiller Assigned: Fences
Wednesday, October 18 *	Digital: Digital Camera Basics and Fine Tuning Photoshop Preferences / Jim Craner and Ralph Roach
Wednesday, October 25	Photo Essay: What makes a photo essay / Connie Frisbee Houde and Jim Craner

Meetings are at 7:30 p.m.
 *Board meetings are at 6:30 p.m.



The *Focus* is published nine times a year by the Schenectady Photographic Society. The organization meets each Wednesday at 7:30 p.m. from October through May to promote and present informative programs, activities and competitions in the photographic arts for photographers throughout the Capital District. Members range from novice to expert.

Annual dues are \$35.00 for individuals and families. The *Focus* newsletter is included in the membership dues. SPS meets at the First United Methodist Church, 603 State Street, Schenectady, New York. Parking and entrances are on Chapel Street, a one way street off Nott Terrace. Guests are welcome at all regular meetings.